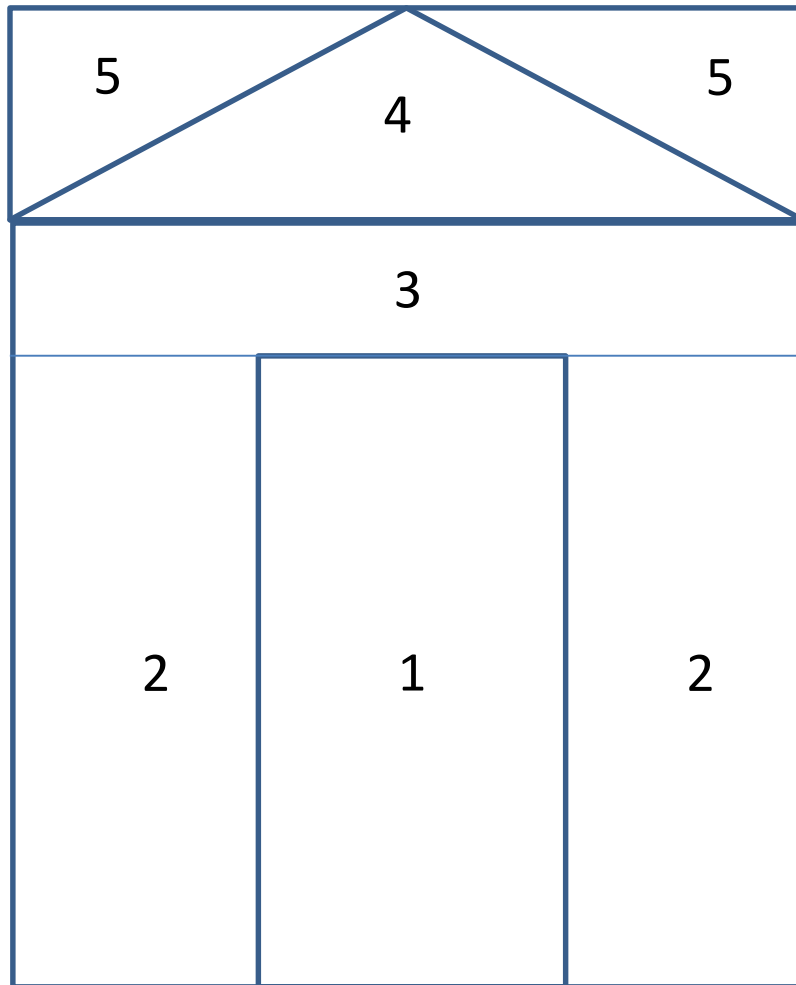


Project Linus Block Challenge – FoQ 2016

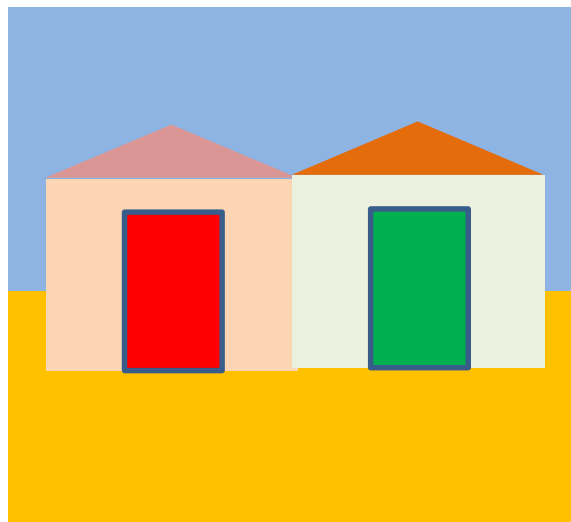
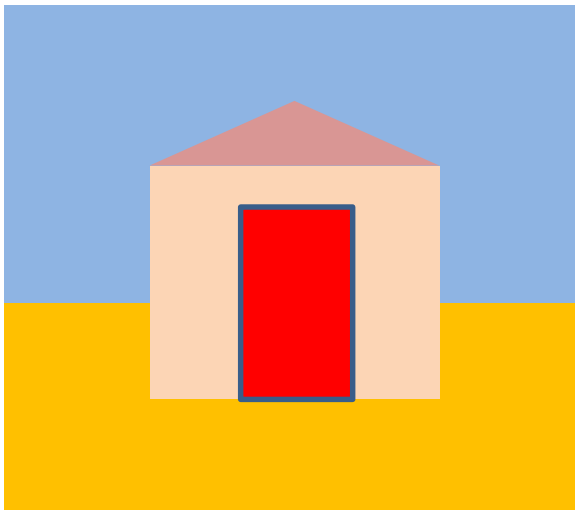
The Houses challenge for 2015 has been very successful, with people obviously enjoying the pattern we gave out, and using their own ideas as well – we have received hundreds of blocks even before the show.

For 2016 we are returning to a previously successful theme of the Seaside with a foundation pieced beach hut and a pieced sailing boat to start you thinking. Sun, sea, sand, ice cream, beach towels, fish, shells, lighthouses, boats and anything else you can think of to create bright and cheerful blocks. Size 12 ½ " unfinished.

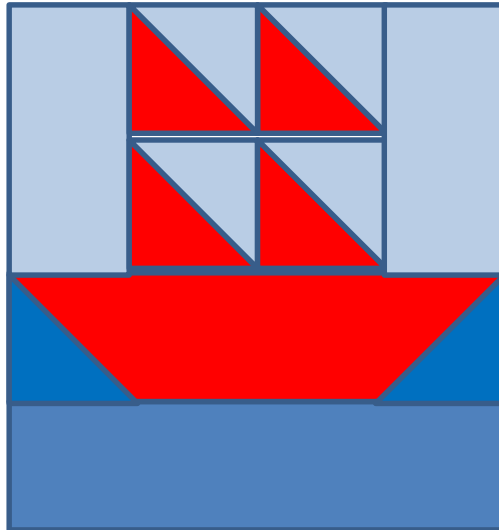
Bring them to next year's Festival or send them to FoQ Blocks, 18 Alison Road, Church Stretton Shropshire SY6 7AT



Here are a couple of ideas for working the beach hut into a full 12 ½ " unfinished block



Sailing Boat



Cut the following pieces (these include a $\frac{1}{4}$ " seam allowance)

SKY – 2 squares $3\frac{7}{8}$ " 2 rectangles $3\frac{1}{2}$ " x $6\frac{1}{2}$ " – light blue

BOAT - 2 squares $3\frac{7}{8}$ " (sails) 1 rectangle $3\frac{1}{2}$ " x $12\frac{1}{2}$ " – any colour

SEA – 2 squares $3\frac{1}{2}$ " 1 rectangle $3\frac{1}{2}$ " x $12\frac{1}{2}$ " – dark blue / grey

Mark a line from corner to corner on the back of each sky square

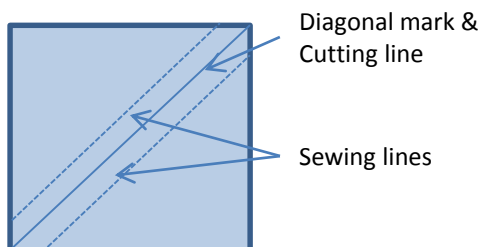
Put a sky and a boat square right sides together, sew a seam $\frac{1}{4}$ " from each side of the diagonal line

Cut along the line and press the triangle pairs open.

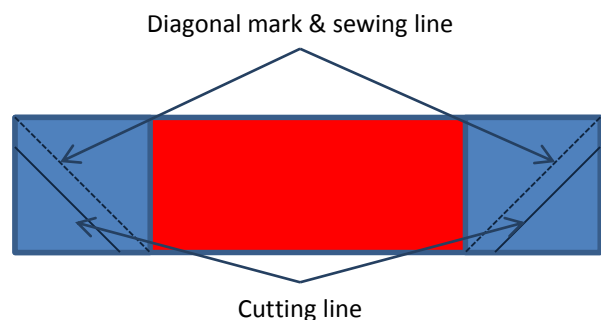
Mark a line from corner to corner of each sea square

Put right sides together at each end of the boat rectangle, making sure they point in opposite directions. Sew along the lines, cut off surplus and press .

Assemble the pieces, making sure all 'sails' are pointing the same way, and that the 'boat' is the right way up.



Sails & Sky squares



Boat and Sea squares

Block size $12\frac{1}{2}$ " unfinished